

DRILL MASTERS Colorado Tool

WORLDWIDE SUPPLIER



3 DAY PRICE LIST

IF YOU NEED
A SPECIAL
DESIGNED
GUNDRILL
CALL US!



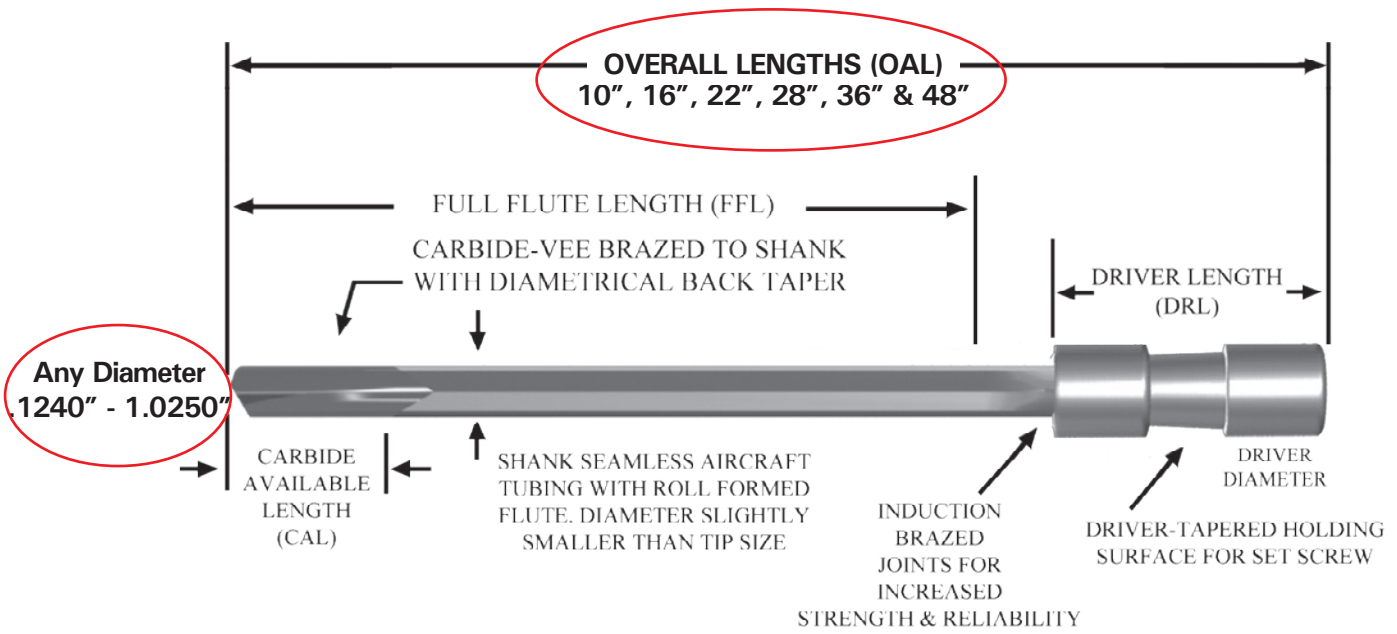
SINGLE FLUTE GUNDRILLS

1.800.658.8855

NORMAL
DELIVERY
UPON
REQUEST

PRICE LIST EFFECTIVE APRIL 2ND, 2018

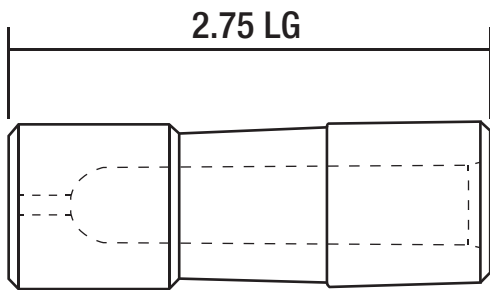
WWW.DMETOOL.COM



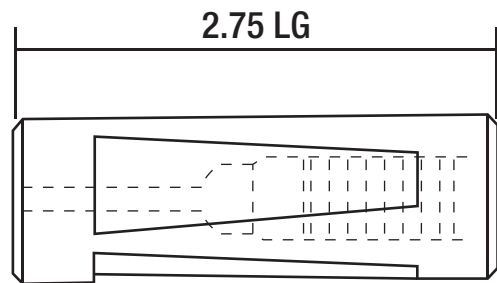
KIDNEY HOLE FROM .1240 TO .3000
 TWO HOLE FROM .3001 TO 1.0250

DRIVER STYLE

STANDARD DRIVERS



STYLE "B"
 TAPERED UNDERCUT

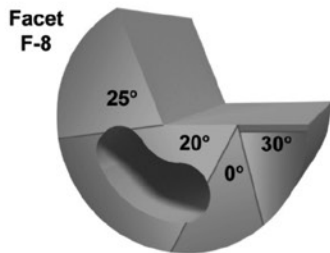


STYLE "C"
 (2) TAPERED FLATS

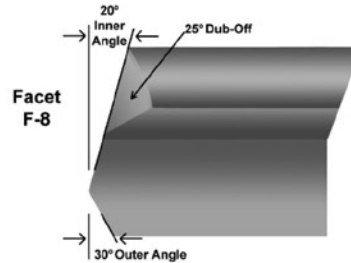
TIP DIAMETER RANGE	DRIVER STYLE	LENGTH	DIAMETER
.1240" - .5000"	(B) 1 - TAPERED U-CUT	2.75"	.7498"/.7493"
.5001 - .7500"	(C) 2 - TAPERED FLATS	2.75"	.9998"/.9993"
.7501" - 1.000"	(C) 2 - TAPERED FLATS	2.75"	1.2498"/1.2493"
1.001" - 1.0250"	(C) 2 - TAPERED FLATS	2.75"	1.4998"/1.4993"

NOSE GRIND

General Purpose stock drill grind for all Ferrous Materials i.e. low carbon steel, mild steel, medium carbon steel, high carbon steel, high speed steel, tool steel, stainless steel, titanium, Inconel etc. Most often used in conjunction with stock **R1 OD contour**. Facet grinds are preferred on specific applications, or when regrind fixtures limit the cam type sharpenings. They can be ground to various slash type angles with good performance and allow greater amount of clearance for coolant to cool the chip at the cutting edge. This grind is standard on most European applications.

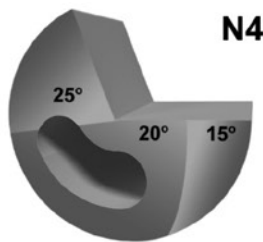


*Objects enhanced for visual representation

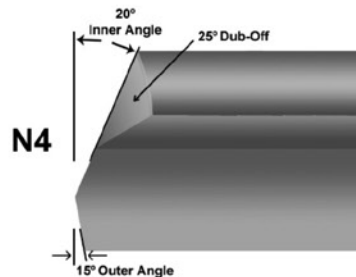


*Objects enhanced for visual representation

For drilling soft (non-ferrous) materials for best size control and finish i.e. aluminum, aluminum alloys, copper, brass, lead, plastics, etc. Most often used in combination with **R4 OD contour**.

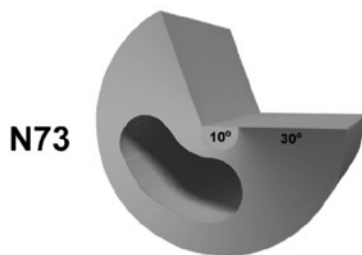


*Objects enhanced for visual representation

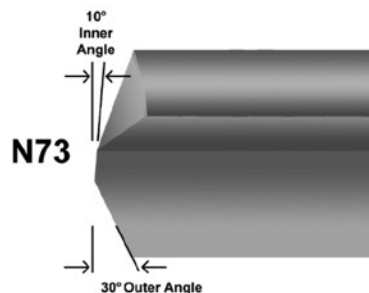


*Objects enhanced for visual representation

For drilling stacked parts and angular entries. Due to the point's placement near the center of the drill, this is the strongest gundrill point.

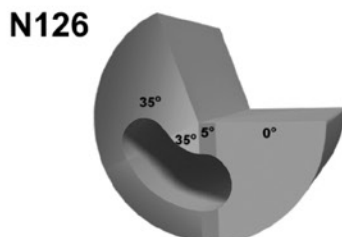


30° Outer Angle
*Objects enhanced for visual representation

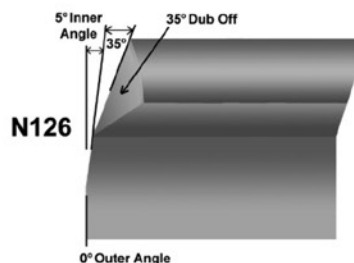


*Objects enhanced for visual representation

For applications requiring flat bottoms in blind holes. It can also be ground for a completely flat bottom or on difficult materials; used to qualify bottoms only.



*Objects enhanced for visual representation

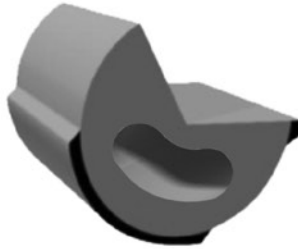


*Objects enhanced for visual representation

CONTOURS

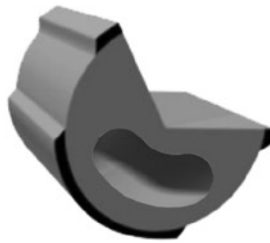
R1: STANDARD BEARING PAD

General purpose stock drill contour for steel, stainless steel, Inconel etc.. It offers minimum bearing contact with the workpiece (non-micable).



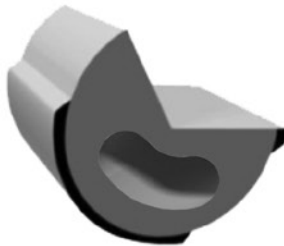
R2: STANDARD BEARING & GUIDE PAD

Recommended for all non-ferrous and cast iron up to Gundrill diameter of .200" (non-micable).



R3: HIGH BEARING PAD & GUIDE

This pad is for good size control, including at exit. This special purpose contour is implemented where micable diameter and extra burnishing action is required, not for all materials (micable).



R4: HIGH BEARING & GUIDE PAD

This pad is to be used in aluminum and brass for best hole finish and for intersecting holes and interrupted cuts, or extra O.D. support and burnishing. Use with wood and plastic in combination with .0015/.002" back taper. Do not use this pad in high nickel content materials due to high burnishing forces (micable).



3 DAY PRICE LIST

Special Design

Single Flute Gundrills

0.1240" Dia. To 0.3569" Dia.

Dia.	OAL	1	2-5	6-11	Shank Size (Dia x Length)
.1240-.1359 in	10	\$111	\$95	\$90	3/4 x 2-3/4
	16	\$119	\$103	\$94	3/4 x 2-3/4
	22	\$119	\$103	\$94	3/4 x 2-3/4
	28	\$126	\$109	\$106	3/4 x 2-3/4
	36	\$122	\$116	\$105	3/4 x 2-3/4
.1360-.1529 in	10	\$112	\$99	\$88	3/4 x 2-3/4
	16	\$121	\$103	\$95	3/4 x 2-3/4
	22	\$121	\$103	\$95	3/4 x 2-3/4
	28	\$129	\$110	\$102	3/4 x 2-3/4
.1530-.1679 in	10	\$112	\$94	\$88	3/4 x 2-3/4
	16	\$121	\$102	\$95	3/4 x 2-3/4
	22	\$121	\$102	\$95	3/4 x 2-3/4
	36	\$137	\$115	\$108	3/4 x 2-3/4
	48	\$151	\$125	\$115	3/4 x 2-3/4
.1680-.1799 in	10	\$113	\$95	\$89	3/4 x 2-3/4
	16	\$124	\$105	\$95	3/4 x 2-3/4
	22	\$124	\$105	\$95	3/4 x 2-3/4
	28	\$137	\$115	\$108	3/4 x 2-3/4
	36	\$137	\$115	\$108	3/4 x 2-3/4
	48	\$151	\$125	\$118	3/4 x 2-3/4
.1800-.1979 in	10	\$114	\$95	\$90	3/4 x 2-3/4
	16	\$124	\$105	\$97	3/4 x 2-3/4
	22	\$124	\$105	\$97	3/4 x 2-3/4
	28	\$137	\$115	\$108	3/4 x 2-3/4
	36	\$137	\$115	\$108	3/4 x 2-3/4
	48	\$151	\$126	\$118	3/4 x 2-3/4
.1980-.2129 in	10	\$117	\$98	\$91	3/4 x 2-3/4
	16	\$124	\$105	\$98	3/4 x 2-3/4
	22	\$124	\$105	\$98	3/4 x 2-3/4
	28	\$141	\$115	\$108	3/4 x 2-3/4
	36	\$141	\$115	\$108	3/4 x 2-3/4
	48	\$152	\$127	\$117	3/4 x 2-3/4
.2130-.2309 in	10	\$113	\$98	\$90	3/4 x 2-3/4
	16	\$123	\$105	\$98	3/4 x 2-3/4
	22	\$123	\$105	\$98	3/4 x 2-3/4
	28	\$138	\$115	\$112	3/4 x 2-3/4
	36	\$138	\$115	\$112	3/4 x 2-3/4
	48	\$150	\$128	\$115	3/4 x 2-3/4
.2310-.2479 in	10	\$117	\$98	\$91	3/4 x 2-3/4
	16	\$124	\$105	\$98	3/4 x 2-3/4
	22	\$124	\$105	\$98	3/4 x 2-3/4
	28	\$137	\$115	\$105	3/4 x 2-3/4
	36	\$137	\$115	\$105	3/4 x 2-3/4
	48	\$148	\$128	\$115	3/4 x 2-3/4

Dia.	OAL	1	2-5	6-11	Shank Size (Dia x Length)
.2480-.2609 in	10	\$117	\$100	\$92	3/4 x 2-3/4
	16	\$129	\$108	\$100	3/4 x 2-3/4
	22	\$129	\$108	\$100	3/4 x 2-3/4
	28	\$140	\$115	\$109	3/4 x 2-3/4
	36	\$140	\$115	\$109	3/4 x 2-3/4
	48	\$151	\$129	\$118	3/4 x 2-3/4
.2610-.2779 in	10	\$118	\$99	\$91	3/4 x 2-3/4
	16	\$128	\$109	\$100	3/4 x 2-3/4
	22	\$128	\$109	\$100	3/4 x 2-3/4
	28	\$141	\$117	\$109	3/4 x 2-3/4
	36	\$141	\$117	\$109	3/4 x 2-3/4
.2780-.2879 in	10	\$117	\$100	\$92	3/4 x 2-3/4
	16	\$129	\$108	\$100	3/4 x 2-3/4
	22	\$129	\$108	\$100	3/4 x 2-3/4
	28	\$141	\$117	\$108	3/4 x 2-3/4
	36	\$141	\$117	\$108	3/4 x 2-3/4
	48	\$151	\$128	\$117	3/4 x 2-3/4
.2880-.3000 in	10	\$117	\$100	\$92	3/4 x 2-3/4
	16	\$128	\$108	\$99	3/4 x 2-3/4
	22	\$128	\$108	\$99	3/4 x 2-3/4
	28	\$142	\$119	\$111	3/4 x 2-3/4
	36	\$142	\$119	\$111	3/4 x 2-3/4
.3001-.3259 in	10	\$120	\$101	\$93	3/4 x 2-3/4
	16	\$129	\$110	\$101	3/4 x 2-3/4
	22	\$129	\$110	\$101	3/4 x 2-3/4
	28	\$143	\$119	\$111	3/4 x 2-3/4
	36	\$143	\$119	\$111	3/4 x 2-3/4
	48	\$154	128	120	3/4 x 2-3/4
.3260-.3409 in	10	\$122	\$104	\$95	3/4 x 2-3/4
	16	\$132	\$111	\$102	3/4 x 2-3/4
	22	\$132	\$111	\$102	3/4 x 2-3/4
	28	\$143	\$119	\$110	3/4 x 2-3/4
	36	\$143	\$119	\$110	3/4 x 2-3/4
	48	\$154	\$129	\$119	3/4 x 2-3/4
.3410-.3569 in	10	\$121	\$102	\$96	3/4 x 2-3/4
	16	\$132	\$110	\$101	3/4 x 2-3/4
	22	\$132	\$110	\$101	3/4 x 2-3/4
	28	\$145	\$121	\$113	3/4 x 2-3/4
	36	\$145	\$121	\$113	3/4 x 2-3/4
	48	\$155	\$132	\$121	3/4 x 2-3/4

3 DAY PRICE LIST

Special Design

Single Flute Gundrills

0.3570" Dia. To 0.5719" Dia.

Dia.	OAL	1	2-5	6-11	Shank Size (Dia x Length)	Dia.	OAL	1	2-5	6-11	Shank Size (Dia x Length)
.3570-.3720 in	10	\$123	\$104	\$95	3/4 x 2-3/4	.4660-.4829 in	10	\$129	\$110	\$101	3/4 x 2-3/4
	16	\$133	\$110	\$103	3/4 x 2-3/4		16	\$137	\$113	\$105	3/4 x 2-3/4
	22	\$133	\$110	\$103	3/4 x 2-3/4		22	\$137	\$113	\$105	3/4 x 2-3/4
	28	\$145	\$121	\$113	3/4 x 2-3/4		28	\$148	\$125	\$115	3/4 x 2-3/4
	36	\$145	\$121	\$113	3/4 x 2-3/4		36	\$148	\$125	\$115	3/4 x 2-3/4
	48	\$157	\$131	\$122	3/4 x 2-3/4		48	\$158	\$133	\$12	3/4 x 2-3/4
.3721-.3879 in	10	\$124	\$105	\$97	3/4 x 2-3/4	.4830-.4979 in	10	\$129	\$110	\$103	3/4 x 2-3/4
	16	\$133	\$112	\$105	3/4 x 2-3/4		16	\$137	\$116	\$108	3/4 x 2-3/4
	22	\$133	\$112	\$105	3/4 x 2-3/4		22	\$137	\$116	\$108	3/4 x 2-3/4
	28	\$147	\$123	\$112	3/4 x 2-3/4		28	\$148	\$125	\$114	3/4 x 2-3/4
	36	\$147	\$123	\$112	3/4 x 2-3/4		36	\$148	\$125	\$114	3/4 x 2-3/4
	48	\$163	\$137	\$128	3/4 x 2-3/4		48	\$160	\$135	\$123	3/4 x 2-3/4
.3880-.4039 in	10	\$124	\$105	\$97	3/4 x 2-3/4	.4980-.5079 in	10	\$132	\$110	\$102	1 x 2-3/4
	16	\$134	\$11	\$105	3/4 x 2-3/4		16	\$139	\$116	\$108	1 x 2-3/4
	22	\$134	\$11	\$105	3/4 x 2-3/4		22	\$139	\$116	\$108	1 x 2-3/4
	28	\$146	\$124	\$113	3/4 x 2-3/4		28	\$151	\$129	\$116	1 x 2-3/4
	36	\$146	\$124	\$113	3/4 x 2-3/4		36	\$151	\$129	\$116	1 x 2-3/4
	48	\$153	\$128	\$120	3/4 x 2-3/4		48	\$151	\$129	\$116	1 x 2-3/4
.4040-.4189 in	10	\$129	\$105	\$99	3/4 x 2-3/4	.5080-.5239 in	10	\$133	\$111	\$104	1 x 2-3/4
	16	\$135	\$114	\$105	3/4 x 2-3/4		16	\$133	\$111	\$104	1 x 2-3/4
	22	\$135	\$114	\$105	3/4 x 2-3/4		22	\$142	\$120	\$110	1 x 2-3/4
	28	\$149	\$124	\$115	3/4 x 2-3/4		28	\$151	\$129	\$118	1 x 2-3/4
	36	\$149	\$124	\$115	3/4 x 2-3/4		36	\$151	\$129	\$118	1 x 2-3/4
	48	\$154	\$130	\$120	3/4 x 2-3/4		48	\$155	\$129	\$118	1 x 2-3/4
.4190-.4349 in	10	\$128	\$105	\$99	3/4 x 2-3/4	.5240-.5409 in	10	\$134	\$111	\$104	1 x 2-3/4
	16	\$134	\$113	\$105	3/4 x 2-3/4		16	\$134	\$111	\$104	1 x 2-3/4
	22	\$134	\$113	\$105	3/4 x 2-3/4		22	\$141	\$120	\$111	1 x 2-3/4
	28	\$150	\$125	\$114	3/4 x 2-3/4		28	\$150	\$128	\$117	1 x 2-3/4
	36	\$150	\$125	\$114	3/4 x 2-3/4		36	\$150	\$128	\$117	1 x 2-3/4
	48	\$162	\$135	\$123	3/4 x 2-3/4		48	\$154	\$130	\$120	1 x 2-3/4
.4350-.4509 in	10	\$129	\$106	\$98	3/4 x 2-3/4	.5410-.5549 in	10	\$136	\$114	\$106	1 x 2-3/4
	16	\$134	\$113	\$105	3/4 x 2-3/4		16	\$136	\$114	\$106	1 x 2-3/4
	22	\$134	\$113	\$105	3/4 x 2-3/4		22	\$144	\$122	\$112	1 x 2-3/4
	28	\$148	\$125	\$115	3/4 x 2-3/4		28	\$157	\$132	\$121	1 x 2-3/4
	36	\$148	\$125	\$115	3/4 x 2-3/4		36	\$157	\$132	\$121	1 x 2-3/4
	48	\$153	\$128	\$117	3/4 x 2-3/4		48	\$170	\$143	\$131	1 x 2-3/4
.4510-.4659 in	10	\$128	\$110	\$101	3/4 x 2-3/4	.5550-.5719 in	10	\$136	\$115	\$108	1 x 2-3/4
	16	\$135	\$115	\$105	3/4 x 2-3/4		16	\$136	\$115	\$108	1 x 2-3/4
	22	\$135	\$115	\$105	3/4 x 2-3/4		22	\$147	\$122	\$112	1 x 2-3/4
	28	\$147	\$125	\$114	3/4 x 2-3/4		28	\$158	\$133	\$122	1 x 2-3/4
	36	\$147	\$125	\$114	3/4 x 2-3/4		36	\$158	\$133	\$122	1 x 2-3/4
	48	\$156	\$132	\$121	3/4 x 2-3/4		48	\$166	\$142	\$133	1 x 2-3/4

3 DAY PRICE LIST

Special Design

Single Flute Gundrills

0.5720" Dia. To 0.7949" Dia.

Dia.	OAL	1	2-5	6-11	Shank Size (Dia x Length)	Dia.	OAL	1	2-5	6-11	Shank Size (Dia x Length)
.5720-.5919 in	10	\$141	\$116	\$110	1 x 2-3/4	.6860-.6999 in	10	\$151	\$128	\$118	1 x 2-3/4
	16	\$141	\$116	\$110	1 x 2-3/4		16	\$151	\$128	\$118	1 x 2-3/4
	22	\$147	\$124	\$112	1 x 2-3/4		22	\$160	\$134	\$124	1 x 2-3/4
	28	\$151	\$133	\$122	1 x 2-3/4		28	\$174	\$146	\$135	1 x 2-3/4
	36	\$151	\$133	\$122	1 x 2-3/4		36	\$174	\$146	\$135	1 x 2-3/4
	48	\$163	\$144	\$132	1 x 2-3/4		48	\$181	\$152	\$141	1 x 2-3/4
.5920-.6039 in	10	\$141	\$118	\$111	1 x 2-3/4	.7000-.7149 in	10	\$158	\$135	\$125	1 x 2-3/4
	16	\$141	\$118	\$111	1 x 2-3/4		16	\$158	\$135	\$125	1 x 2-3/4
	22	\$150	\$127	\$117	1 x 2-3/4		22	\$168	\$143	\$133	1 x 2-3/4
	28	\$159	\$135	\$127	1 x 2-3/4		28	\$181	\$155	\$143	1 x 2-3/4
	36	\$159	\$135	\$127	1 x 2-3/4		36	\$181	\$155	\$143	1 x 2-3/4
	48	\$163	\$142	\$131	1 x 2-3/4		48	\$194	\$162	\$149	1 x 2-3/4
.6040-.6219 in	10	\$150	\$127	\$115	1 x 2-3/4	.7150-.7309 in	10	\$162	\$136	\$127	1 x 2-3/4
	16	\$150	\$127	\$115	1 x 2-3/4		16	\$162	\$136	\$127	1 x 2-3/4
	22	\$158	\$135	\$124	1 x 2-3/4		22	\$165	\$145	\$134	1 x 2-3/4
	28	\$166	\$144	\$133	1 x 2-3/4		28	\$185	\$156	\$144	1 x 2-3/4
	36	\$166	\$144	\$133	1 x 2-3/4		36	\$185	\$156	\$144	1 x 2-3/4
	48	\$179	\$156	\$144	1 x 2-3/4		48	\$200	\$168	\$156	1 x 2-3/4
.6220-.6359 in	10	\$151	\$127	\$117	1 x 2-3/4	.7310-.7459 in	10	\$165	\$138	\$127	1 x 2-3/4
	16	\$151	\$127	\$117	1 x 2-3/4		16	\$165	\$138	\$127	1 x 2-3/4
	22	\$162	\$134	\$124	1 x 2-3/4		22	\$172	\$145	\$135	1 x 2-3/4
	28	\$171	\$145	\$135	1 x 2-3/4		28	\$191	\$157	\$145	1 x 2-3/4
	36	\$171	\$145	\$135	1 x 2-3/4		36	\$191	\$157	\$145	1 x 2-3/4
	48	\$184	\$155	\$144	1 x 2-3/4		48	\$206	\$170	\$157	1 x 2-3/4
.6360-.6499 in	10	\$148	\$124	\$114	1 x 2-3/4	.7460-.7609 in	10	\$165	\$138	\$128	1 x 2-3/4
	16	\$148	\$124	\$114	1 x 2-3/4		16	\$165	\$138	\$128	1 x 2-3/4
	22	\$156	\$132	\$120	1 x 2-3/4		22	\$175	\$145	\$135	1 x 2-3/4
	28	\$166	\$141	\$129	1 x 2-3/4		28	\$189	\$158	\$145	1 x 2-3/4
	36	\$166	\$141	\$129	1 x 2-3/4		36	\$189	\$158	\$145	1 x 2-3/4
	48	\$179	\$152	\$139	1 x 2-3/4		48	\$195	\$165	\$151	1 x 2-3/4
.6500-.6699 in	10	\$148	\$126	\$115	1 x 2-3/4	.7610-.7799 in	10	\$182	\$155	\$137	1-1/4 x 2-3/4
	16	\$148	\$126	\$115	1 x 2-3/4		16	\$182	\$155	\$137	1-1/4 x 2-3/4
	22	\$157	\$132	\$121	1 x 2-3/4		22	\$182	\$155	\$137	1-1/4 x 2-3/4
	28	\$171	\$143	\$132	1 x 2-3/4		28	\$195	\$165	\$150	1-1/4 x 2-3/4
	36	\$171	\$143	\$132	1 x 2-3/4		36	\$195	\$165	\$150	1-1/4 x 2-3/4
	48	\$185	\$154	\$143	1 x 2-3/4		48	\$231	\$198	\$189	1-1/4 x 2-3/4
.6700-.6859 in	10	\$151	\$127	\$116	1 x 2-3/4	.7800-.7949 in	10	\$161	\$143	\$134	1-1/4 x 2-3/4
	16	\$151	\$127	\$116	1 x 2-3/4		16	\$161	\$143	\$134	1-1/4 x 2-3/4
	22	\$158	\$133	\$122	1 x 2-3/4		22	\$161	\$143	\$134	1-1/4 x 2-3/4
	28	\$167	\$145	\$133	1 x 2-3/4		28	\$171	\$154	\$144	1-1/4 x 2-3/4
	36	\$167	\$145	\$133	1 x 2-3/4		36	\$171	\$154	\$144	1-1/4 x 2-3/4
	48	\$180	\$151	\$141	1 x 2-3/4		48	\$231	\$195	\$179	1-1/4 x 2-3/4

3 DAY PRICE LIST

Special Design

Single Flute Gundrills

0.7950" Dia. To 1.0250" Dia.

Dia.	OAL	1	2-5	6-11	Shank Size (Dia x Length)
.7950-.8089 in	10	\$178	\$150	\$140	1-1/4 x 2-3/4
	16	\$178	\$150	\$140	1-1/4 x 2-3/4
	22	\$178	\$150	\$140	1-1/4 x 2-3/4
	28	\$192	\$161	\$149	1-1/4 x 2-3/4
	36	\$192	\$161	\$149	1-1/4 x 2-3/4
	48	\$207	\$174	\$161	1-1/4 x 2-3/4
.8090-.8259 in	10	\$180	\$152	\$140	1-1/4 x 2-3/4
	16	\$180	\$152	\$140	1-1/4 x 2-3/4
	22	\$180	\$152	\$140	1-1/4 x 2-3/4
	28	\$195	\$164	\$150	1-1/4 x 2-3/4
	36	\$195	\$164	\$150	1-1/4 x 2-3/4
	48	\$209	\$176	\$163	1-1/4 x 2-3/4
.8260-.8409 in	10	\$192	\$161	\$149	1-1/4 x 2-3/4
	16	\$192	\$161	\$149	1-1/4 x 2-3/4
	22	\$192	\$161	\$149	1-1/4 x 2-3/4
	28	\$201	\$169	\$157	1-1/4 x 2-3/4
	36	\$201	\$169	\$157	1-1/4 x 2-3/4
	48	\$217	\$183	\$170	1-1/4 x 2-3/4
.8410-.8569 in	10	\$185	\$155	\$145	1-1/4 x 2-3/4
	16	\$185	\$155	\$145	1-1/4 x 2-3/4
	22	\$185	\$155	\$145	1-1/4 x 2-3/4
	28	\$197	\$167	\$155	1-1/4 x 2-3/4
	36	\$197	\$167	\$155	1-1/4 x 2-3/4
	48	\$213	\$180	\$167	1-1/4 x 2-3/4
.8570-.8729 in	10	\$201	\$165	\$155	1-1/4 x 2-3/4
	16	\$201	\$165	\$155	1-1/4 x 2-3/4
	22	\$201	\$165	\$155	1-1/4 x 2-3/4
	28	\$212	\$177	\$163	1-1/4 x 2-3/4
	36	\$212	\$177	\$163	1-1/4 x 2-3/4
	48	\$235	\$201	\$185	1-1/4 x 2-3/4
.8570-.8729 in	10	\$201	\$165	\$155	1-1/4 x 2-3/4
	16	\$201	\$165	\$155	1-1/4 x 2-3/4
	22	\$201	\$165	\$155	1-1/4 x 2-3/4
	28	\$212	\$177	\$163	1-1/4 x 2-3/4
	36	\$212	\$177	\$163	1-1/4 x 2-3/4
	48	\$235	\$201	\$185	1-1/4 x 2-3/4
.8730-.8879 in	10	\$201	\$165	\$157	1-1/4 x 2-3/4
	16	\$201	\$165	\$157	1-1/4 x 2-3/4
	22	\$201	\$165	\$157	1-1/4 x 2-3/4
	28	\$215	\$185	\$165	1-1/4 x 2-3/4
	36	\$215	\$185	\$165	1-1/4 x 2-3/4
	48	\$240	\$201	\$185	1-1/4 x 2-3/4
.8880-.8959 in	10	\$202	\$171	\$156	1-1/4 x 2-3/4
	16	\$202	\$171	\$156	1-1/4 x 2-3/4
	22	\$202	\$171	\$156	1-1/4 x 2-3/4
	28	\$217	\$179	\$165	1-1/4 x 2-3/4
	36	\$217	\$179	\$165	1-1/4 x 2-3/4
	48	\$234	\$193	\$178	1-1/4 x 2-3/4

Dia.	OAL	1	2-5	6-11	Shank Size (Dia x Length)
.8960-.9189 in	10	\$214	\$180	\$166	1-1/4 x 2-3/4
	16	\$214	\$180	\$166	1-1/4 x 2-3/4
	22	\$214	\$180	\$166	1-1/4 x 2-3/4
	28	\$225	\$191	\$175	1-1/4 x 2-3/4
	36	\$225	\$191	\$175	1-1/4 x 2-3/4
	48	\$243	\$206	\$189	1-1/4 x 2-3/4
.9190-.9329	10	\$216	\$181	\$170	1-1/4 x 2-3/4
	16	\$216	\$181	\$170	1-1/4 x 2-3/4
	22	\$216	\$181	\$170	1-1/4 x 2-3/4
	28	\$228	\$195	\$177	1-1/4 x 2-3/4
	36	\$228	\$195	\$177	1-1/4 x 2-3/4
	48	\$278	\$236	\$215	1-1/4 x 2-3/4
.9330-.9509 in	10	\$212	\$177	\$164	1-1/4 x 2-3/4
	16	\$212	\$177	\$164	1-1/4 x 2-3/4
	22	\$212	\$177	\$164	1-1/4 x 2-3/4
	28	\$228	\$191	\$176	1-1/4 x 2-3/4
	36	\$228	\$191	\$176	1-1/4 x 2-3/4
	48	\$275	\$230	\$213	1-1/4 x 2-3/4
.9510-.9619 in	10	\$226	\$190	\$175	1-1/4 x 2-3/4
	16	\$226	\$190	\$175	1-1/4 x 2-3/4
	22	\$226	\$190	\$175	1-1/4 x 2-3/4
	28	\$240	\$203	\$189	1-1/4 x 2-3/4
	36	\$240	\$203	\$189	1-1/4 x 2-3/4
	48	\$259	\$219	\$204	1-1/4 x 2-3/4
.9620-.9819 in	10	\$233	\$195	\$188	1-1/4 x 2-3/4
	16	\$233	\$195	\$188	1-1/4 x 2-3/4
	22	\$233	\$195	\$188	1-1/4 x 2-3/4
	28	\$246	\$201	\$188	1-1/4 x 2-3/4
	36	\$246	\$201	\$188	1-1/4 x 2-3/4
	48	\$266	\$217	\$203	1-1/4 x 2-3/4
.9820-.9979 in	10	\$228	\$195	\$180	1-1/4 x 2-3/4
	16	\$228	\$195	\$180	1-1/4 x 2-3/4
	22	\$228	\$195	\$180	1-1/4 x 2-3/4
	28	\$241	\$202	\$187	1-1/4 x 2-3/4
	36	\$241	\$202	\$187	1-1/4 x 2-3/4
	48	\$260	\$218	\$202	1-1/4 x 2-3/4
.9980-1.0250 in	10	\$237	\$197	\$182	1-1/4 x 2-3/4
	16	\$237	\$197	\$182	1-1/4 x 2-3/4
	22	\$237	\$197	\$182	1-1/4 x 2-3/4
	28	\$247	\$205	\$195	1-1/4 x 2-3/4
	36	\$247	\$205	\$195	1-1/4 x 2-3/4
	48	\$280	\$231	\$215	1-1/4 x 2-3/4



All products proudly
Made in USA

PRICE LIST EFFECTIVE
APRIL 2ND, 2018
WWW.DMETOOL.COM